

**NATIONAL DISASTER MANAGEMENT AGENCY (NaDMA)
MEDIA RELEASE**

**Beryl Expected To Remain An Extremely Dangerous Major Hurricane
Release #11**

St. George's, Grenada – Sunday, 30 June 2024, 1:00 a.m.

Grenada, Carriacou, and Petite Martinique are currently under a Hurricane Warning.

At 11:00 pm, the eye of Hurricane Beryl was located near latitude 11.5 North, longitude 58.1 West. Beryl is moving toward the west near 20 mph. A continued quick westward to west-northwestward motion is expected during the next few days.

On the forecast track, the center of Beryl is expected to move across the Windward Islands Monday morning and across the southeastern and central Caribbean Sea late Monday through Wednesday. Maximum sustained winds are near 130 mph with higher gusts. Beryl is a category 4 hurricane on the Saffir-Simpson Hurricane Wind Scale.

Fluctuations in strength are likely during the next day or so, and Beryl is expected to remain an extremely dangerous major hurricane as its core moves through the Windward Islands into the eastern Caribbean. Hurricane-force winds extend outward up to 30 miles from the center and tropical-storm-force winds extend outward up to 115 miles. The minimum central pressure based on Hurricane Hunter aircraft data is 959 mb.

The Met Office continues to monitor this system.

The following are some preparedness actions that you should take:

- Update your family disaster plan.
- Have a Disaster supplies kit (3-day supply of non-perishable food, water, medication, flashlights, etc.)
- Trim overhanging trees and branches.
- Clear guttering and drains.
- Know where the nearest Emergency Shelters are located.

The public is encouraged to follow the advisories and forecasts the Meteorological Office and NaDMA issued.

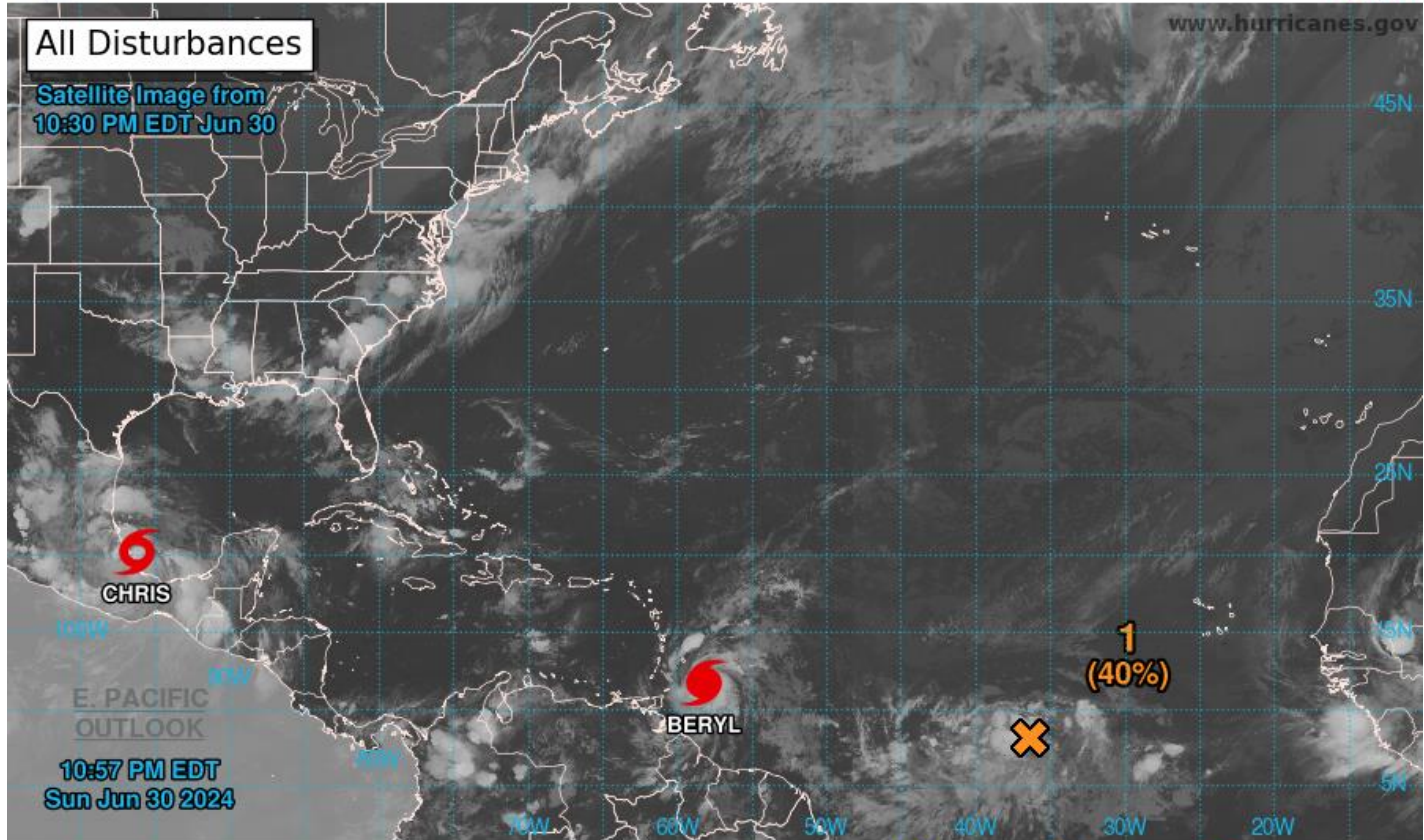
For additional information, contact Mrs. Ruth Jacob-Roberts, Public Information Officer at NaDMA 440-8390-4; cell 533-0766, or email: admin@nadma.gd and pro@nadma.gd.

NaDMA is the official source for all disaster-related information in Grenada.



Two-Day Graphical Tropical Weather Outlook

National Hurricane Center Miami, Florida



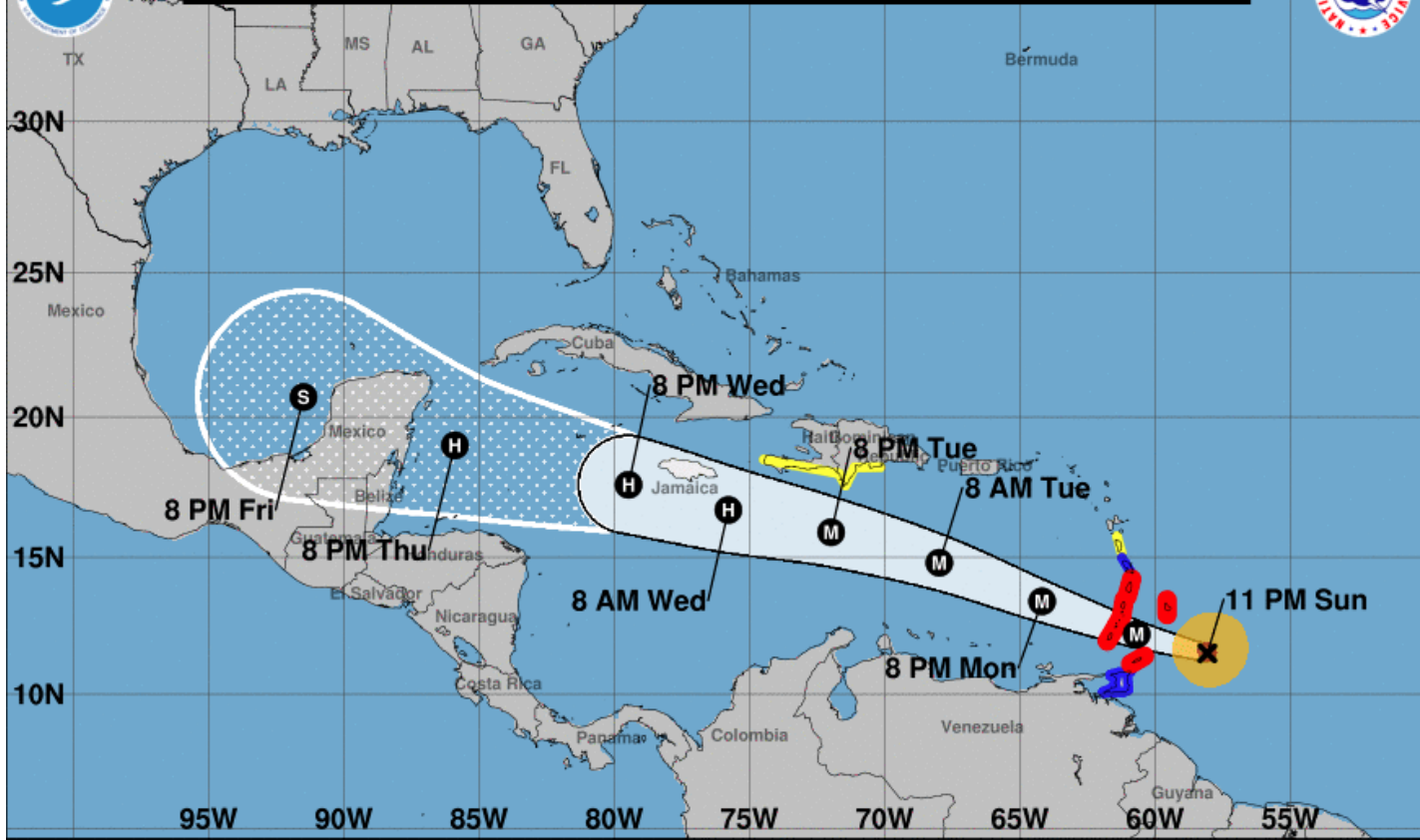
Current Disturbances and Two-Day Cyclone Formation Chance: X < 40% X 40-60% X > 60%

Tropical or Sub-Tropical Cyclone: ○ Depression ⊖ Storm ⊖ Hurricane

⊗ Post-Tropical Cyclone or Remnants



Note: The cone contains the probable path of the storm center but does not show the size of the storm. Hazardous conditions can occur outside of the cone.



Hurricane Beryl
 Sunday June 30, 2024
 11 PM AST Advisory 10
 NWS National Hurricane Center

Current information: x
 Center location 11.5 N 58.1 W
 Maximum sustained wind 130 mph
 Movement W at 20 mph

Forecast positions:
 ● Tropical Cyclone ○ Post/Potential TC
 Sustained winds: D < 39 mph
 S 39-73 mph H 74-110 mph M > 110 mph

Potential track area:

Day 1-3 Day 4-5

Watches:

Hurricane Trop Stm

Warnings:

Hurricane Trop Stm

Current wind field estimate:

Hurricane Trop Stm